

Exciting Retail and Restaurant Opportunities

Images are computer generated



St Johns Street, Chester, Cheshire, CH1 1DD

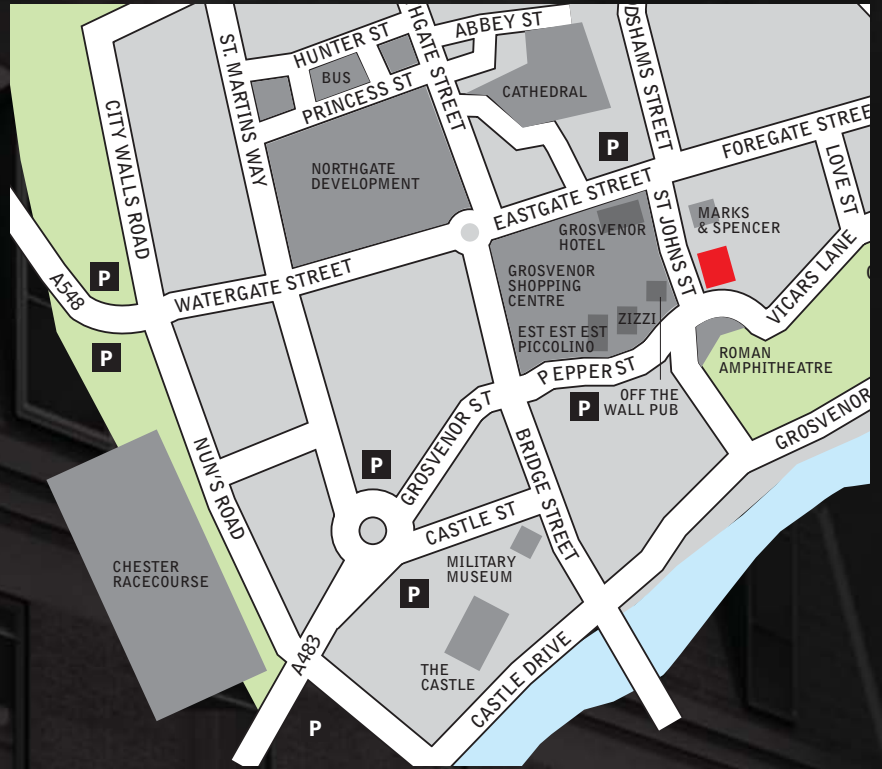
THE **eXchange**
CHESTER

THE exchange CHESTER

location

The Exchange is situated on St John's Street in the heart of Chester City Centre in close proximity to many of Chester's main retail and leisure facilities. A variety of high quality restaurants and bars are also situated nearby including Piccolino, Est Est Est and Zizzi, as well as the renowned 5 star Grosvenor Hotel which is approximately 400 metres away.

In addition to this Chester's main bus station is approximately 800m away whilst Chester mainline railway station is nearby with regular services to Manchester, Liverpool and London Euston. There are also two multi-story car parks close by on Pepper Street.



description

The retail and restaurant opportunities form part of a substantial mixed-use scheme including a new quality hotel facing the Roman Amphitheatre and 25,000 (2,323 sq m) of quality office space.

3 exciting trading opportunities will be available as per the plans of the retail/leisure shown.

planning

We are advised that a planning application for the scheme, including the retail uses as shown on the plan, has been submitted.

terms

Leasehold terms on application.

viewing

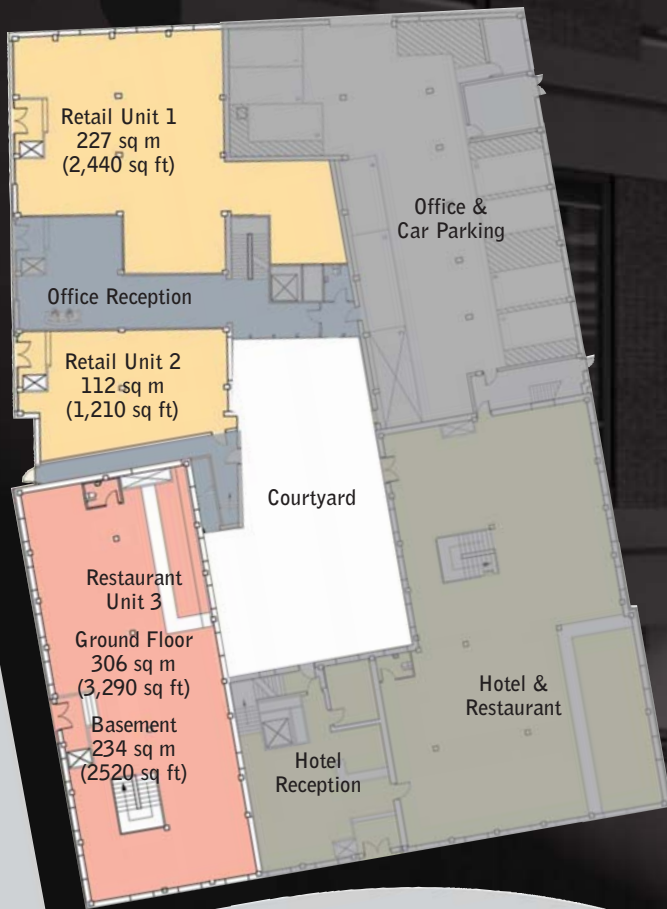
For further information contact the sole agent.

All enquiries:

0161 834 7187

GVA Grimley

81 Fountain Street, Manchester M2 2EE
www.gvagrimley.co.uk



Please note that floor areas have been provided by the architect and will be subject to verification in due course.

MISREPRESENTATION ACT: GVA Grimley for themselves and for the vendors or lessors of this property for whom they act, give notice that: (i) these particulars are a general outline only, for the guidance of prospective purchasers or tenants, and do not constitute the whole or any part of an offer or contract; (ii) GVA Grimley cannot guarantee the accuracy of any description, dimensions, references to condition, necessary permissions for use and occupation and other details contained herein and prospective purchasers or tenants must not rely on them as statements of fact or representations and must satisfy themselves as to their accuracy; (iii) no employee of GVA Grimley has any authority to make or give any representation or warranty or enter into any contract whatever in relation to this property; (iv) rents quoted in these particulars may be subject to VAT in addition; and (v) GVA Grimley will not be liable, in negligence or otherwise, for any loss arising from the use of these particulars. These images are computer generated and may not reflect the finished development. Designed and produced by thedesignexchange.co.uk July 2006.